

by boe

2016 / III







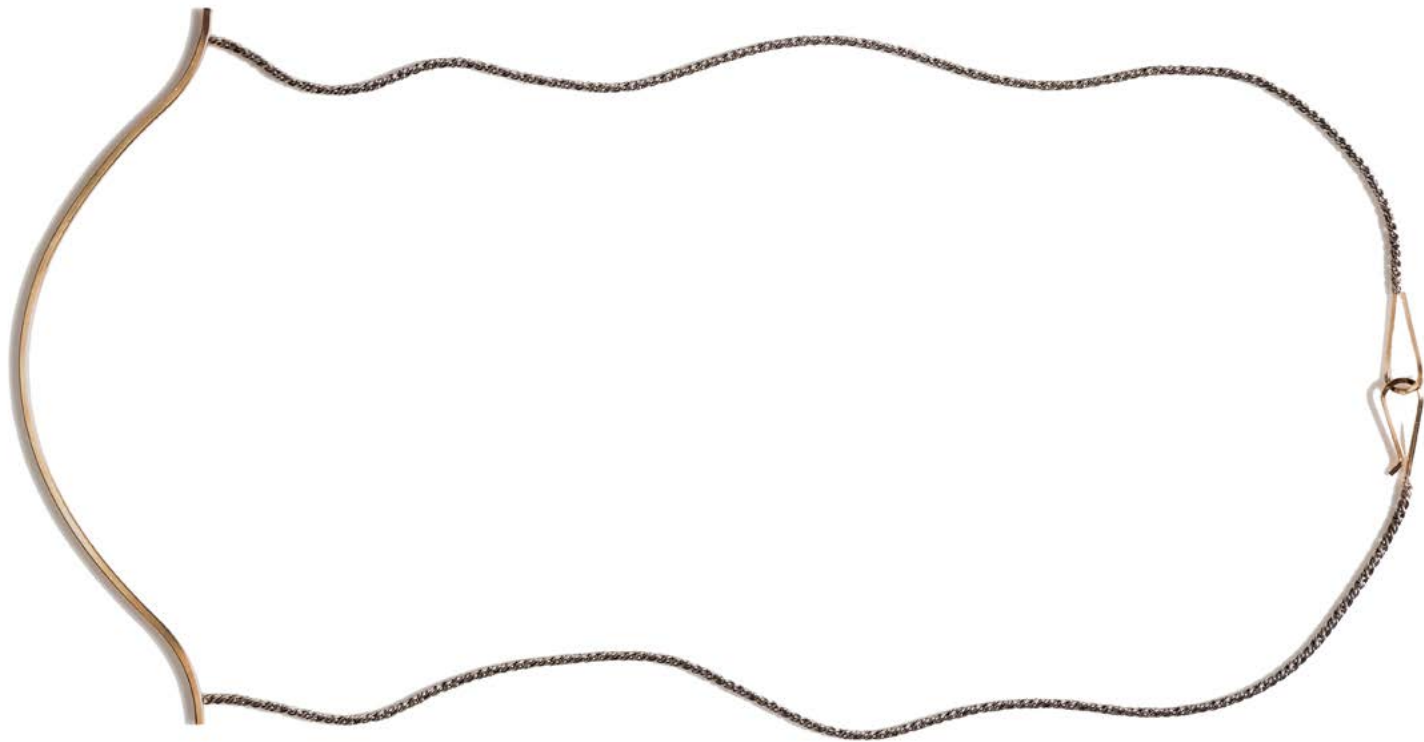


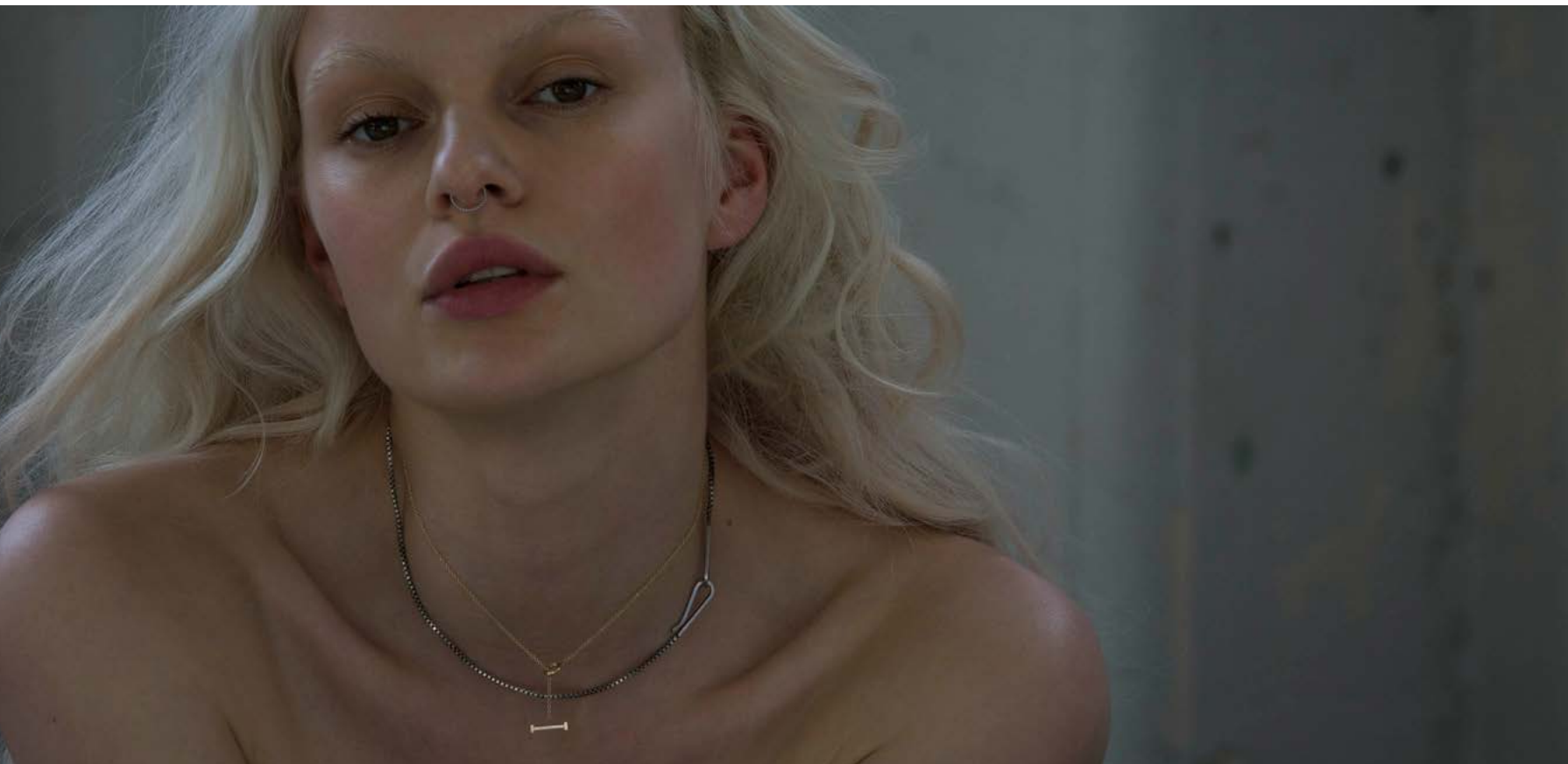














by boe

2016 / III

The influence of artists, art and music that made me feel inspired while designing 2016 III do not show up very distinctly in these pieces as this round of new styles was about tying together and complimenting our previous ones, further building our core collection that is wearable, simple yet special.

Some new shapes, including the Monocle inspired necklace and a simple curved earring in our heavier gauge wire show a more direct inspiration from the surrealist pieces by Elsa Schiaparelli and various vintage outlandish sunglasses from the seventies

In this line sheet we chose to show new styles mixed in with selected highlights from our current collection to give you nicely curated groups to shop from.

Annika Inez

